

TORO Count on it.

Sand Pro[®] 3040/5040 Accessories

Sand Pro[®] 3040/5040

With the Quick Attach System™ (QAS) and over 21 attachments, the Sand Pro 3040 & 5040 are versatile utility vehicles with many uses on golf courses and sports fields. QAS lets you change most attachments in under a minute, with no tools required. And the variety of attachments allows you to repair a bunker, groom wet or dry sand, blow debris or reconstruct a tee with one machine. The Sand Pro keeps your course or field in tournament condition every day.



Front Attachments

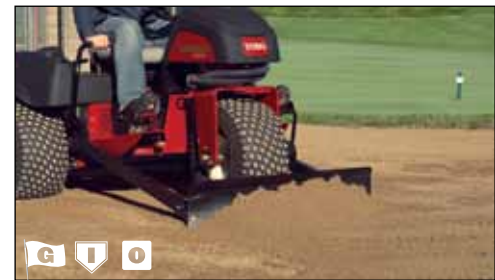
Front Lift Frame Assembly | 08712

- Front QAS mounting assembly and hydraulic components
- Used on Sand Pro 5040 only



Hydraulic Flex Blade | 08713

- Hydraulic QAS flex blade is designed for leveling, packing, and smoothing uneven areas in one pass
- Hydraulic float reduces operator influence and reduces over aggressive digging
- Steerable flex design reduces the possibility of operators catching the blade on a bunker wall or grass lip.
- Dual-function flex blade can be rotated on the jagged edge or smooth edge for the desired application
- Available for Sand Pro 5040 only and requires Front Lift Frame Assembly– 08712



Manual Blade | 08714

- Standard 40" (102 cm) width steel blade
- Spring balanced manual blade is used for leveling uneven areas and pushing up bunkers after washouts
- Ideal for bunker renovation or new construction
- Foot lever enables operator to apply added down pressure
- Blade extension available to increase blade width to 60" (152 cm) for leveling out larger uneven areas
- Cannot be used when 08712 is installed

60" (152 cm) Blade Extension | 115-5646

©2013 The Toro Company
8111 Lyndale Ave. S.
Bloomington, MN 55420-1196
Printed in the U.S.A.

Specifications subject to change.
Please contact your Toro distributor for details. Revised 2/13



Sand Pro® 3040/5040 Accessories

Mid-Mount Attachments

Mid-Mount Assembly | 08731

- Base mounting assembly for mid-mount toolbars with spring-loaded regulation to allow relief if obstruction is hit



Weeder Tine Toolbar | 08732

- Ideal for removing weeds and grass from less maintained bunkers and fields
- Requires Mid-Mount Assembly – 08731



Solid Tine Toolbar | 08734

- Used for general scarifying applications
- Rotate teeth to maximize tine life
- Requires Mid-Mount Assembly – 08731



Spring Tine Toolbar | 08733

- Use for light to moderate scarifying and daily maintenance in bunkers and on premium fields
- Requires Mid-Mount Assembly – 08731



Leveling Blade | 108-8496

- Attaches to any mid-mount toolbar to quickly level out large areas
- Foot operated latch allows operator to lower leveling blade independently from the other mid-mount toolbar
- Selectable depth setting feature reduces operator influence and allows for more consistent leveling



Carbide Tine Toolbar | 08735

- Use in the harshest conditions and for extended life
- 15 carbide tines included
- Requires Mid-Mount Assembly – 08731



Edger | 08766 **NEW!**

- Maintains the grass edge of the outfield near the infield skin or warning track
- Easily renovate ballfields by removing overgrown turf and infield lip build-up
- Significantly reduces labor required for infield edging
- Requires Rear Remote Hydraulics – 08781

Sand Pro® 3040/5040 Accessories

Rear QAS Attachments



Tooth Rake | 08751

- Designed to lightly scarify, pack, smooth, and groom in one pass
- Use in dry or wet conditions
- Can improve the condition of neglected sports fields

Weight Kit for Tooth Rake | 115-4333

- Additional weight for the Tooth Rake attachment to improve performance in coarse or wet conditions
- Set of 5 weights



Tooth Rake Broom | 08816

- 75" (190 cm) Brush
- Attaches behind the Tooth Rake (08751) for a smoother finish



Pivoting Trowels Kit | 119-7158

- This new kit allows independent outside trowels to pivot and rake across the entire turn which eliminates unraked teardrop
- Attaches to Tooth Rake



Spring Rake | 08752

- Leaf rake assembly designed to be used alone or in combination with the tooth rake (08751) to achieve desired appearance
- Great for wet conditions and collecting debris in groomed areas
- If used independently, requires QAS A-Frame Assembly - 108-9427



Drag Mat Carrier System | 08756

- QAS mounted carrier frame with hydraulic lifter allows operator to raise and lower drag mats without ever leaving the operator seat
- 72" (183 cm) width
- Required for use with Coco Drag Mat - 08758 and/or Steel Drag Mat - 08757 for desired finish



Coco Drag Mat | 08758

- Quickly produces a premium finish on dry, level surfaces
- Requires Drag Mat Carrier System - 08756



Steel Drag Mat | 08757

- Designed to for more rugged surfaces to quickly groom and finish
- Use on wet or dry sand surfaces
- Requires Drag Mat Carrier System - 08756



Basic Drag Mat System | 112-1424

- Simple drag mat system
- Requires 108-9427 & 110-1375



Nail Drag | 08761

- Pivots to follow the contours of uneven field surface
- Use to scarify, loosen, or weed before smoothing
- Easily adjust nail pattern and depth
- Accepts up to a 40D common nail



Segmented Grooming Broom | 08753

- Designed to minimize top surface disruption, to maximize firmness, and provide a smooth finished look in contoured bunkers

Replacement Segmented Grooming Broom | 110-8182

- Replacement grooming broom with stiffer bristles

Weight Kit for Segmented Grooming Broom | 112-0025

- Additional weight for Segmented Grooming Broom to improve performance in coarse or wet conditions
- Set of 4 weights



Grooming Brush | 08794 **NEW!**

- Designed to groom and level synthetic turf fields
- Designed to brush in topdressing and stand-up turf on greens and tees - requires Greens Brush Kit (119-7108) or Synthetic Turf Brush Kit (119-7107)

Greens Brush | 119-7108

Synthetic Turf Brush | 119-7107

Spring Tine Kit | 119-7109

- Use to help stand-up and decompact synthetic turf

Magnet Attachment | 119-2827

- Use to collect ferrous debris on synthetic field



Synthetic Turf Conditioner | 08790

- Stainless spring steel brushes loosen infill from compacted synthetic turf fields
- Use to scarify, loosen, or weed infields
- Use to groom beaches and rocky trails

Sand Pro® 3040/5040 Accessories

Rear QAS Attachments



Bunker Pump | 08765

- Brings bunkers back into play faster with a single operator
- Throws water up to 40' (12 m) and can pump 95 gal/min (360 l/min)
- Adjustable throw direction and angle
- Mounts to front QAS (Sand Pro 5040) and rear QAS (Sand Pro 3040 & 5040)
- Requires Rear Remote Hydraulics (08781) for rear QAS mount
- Requires Front Lift Frame Assembly (08712), Rear Remote Hydraulics (08781) and Front Remote Hydraulics (08782) for front QAS mount (on Sand Pro 5040 only)



Bunker Pump Remote Discharge Kit | 115-2084

- An available 50' (15 m) discharge hose allows the QAS Bunker Pump to be removed and dropped into hard to reach areas.



QAS Debris Blower | 08759

- High powered blower designed to quickly clear debris from groomed and unwanted areas
- Hydraulically powered, 2000 rpm fan speed [2700 cfm @ 130 kph (2700 cfm @ 81 mph)]
- Requires Rear Remote Hydraulics - 08781



QAS Finish Grader | 08754

- Use to level and/or scarify large areas
- Includes box plow and scarifier with spring load regulation to allow relief if obstruction is hit
- Weeder, solid or carbine tines can be mounted to the Finish Grader, then add the basic Drag Mat System (112-1424) to scarify and drag infield in one pass.



QAS Spiker | 08755

- Use for spiking greens and other formal turf to increase air flow for healthier turf



Allied Attachments



Rahn Groomer | Allied

- The Rahn GL650 Infield Groomer levels uneven playing fields, helping to prevent ridge build up while creating a safer, more consistent infield
- The triple row broom is perfect for finishing the playing surface and can be stored upright for easy transport
- The 2-Way leveling system provides both a lock and float position to match infield conditions
- **Rahn Groomer available from Rahn Industries at www.rahn groomer.com or 800-298-1707**



Lip Broom (LB100) | Allied

- Eliminates the task of manually maintaining infield lips
- Removes ridge buildup by sweeping material back into the infield
- Use traction unit controls to adjust aggressiveness and speed
- Mounts to front QAS (Sand Pro 5040)
- Requires Front Lift Frame Assembly–08712 for front attachment
- Requires rear remote hydraulics (08781)
- **Lip Broom available from Rahn Industries at www.rahn groomer.com or 800-298-1707**



Lip Broom (LB400) | Allied

- Eliminates the task of manually maintaining infield lips
- Removes ridge buildup by sweeping material back into the infield
- Use traction unit controls to adjust aggressiveness and speed
- Mounts to rear QAS (Sand Pro 3040 & 5040)



- Two optional edging attachments available for trimming cart paths and walkways:
 - Steel concave disk
 - Twisted wire wheel for asphalt paths
- Requires rear remote hydraulics (08781)
- **Lip Broom available from Rahn Industries at www.rahn groomer.com or 800-298-1707**



Sand Pro® 3040/5040 Accessories

Accessories



QAS A-frame Assembly | 108-9427

- Can be used to attach Spring Rake 08752 to be used independently

400 Hour Filter Maintenance Kit | 30035

- Includes 9 engine oil filters, 2 hydraulic oil filters, and 2 air filters

Rear Remote Hydraulics | 08781

- Quick connect design allows rear powered attachments to be connected in under a minute

Front Remote Hydraulics | 08782

- Quick connect design allows front powered attachments to be connected in under a minute
- Requires Rear Remote Hydraulics – 08781

Variable Orifice Kit | 112-1433

- Slows hydraulic lift and lower for increased precision and accuracy when using hydraulically powered attachments



Light Kit | 110-1314

- Front and rear flood lights improve operator visibility during low natural light operation



Speed Control Kit | 110-1371

- Adjustable speed check trains operators to groom at the desired speed while allowing the traction unit to operate in transport speed between tasks without any adjustments or levers



Hitch/Tow Bar | 110-1375

- Allows the traction unit to convert to a utility vehicle to transport materials or trailers
- Attaches to QAS A-Frame or 108-9427 for quick removal when not in use

50 lb (22.7kg) Front Weight Kit | 100-6442

- Allows the Spiker or Rahn Groomer attachments without the Front Lift Frame Assembly attached to meet ANSI compliance

Optional Tires



Smooth Tire | 112-0034

- Includes individual tire, wheel and stem valve assembly
- Typically used on greens



Turf Tire | 94-6126

- Turf tread tire